

*TERRITORIALITY AND TERRITORIAL INTELLIGENCE DEVICES: A FUNCTIONAL INVESTIGATION FROM INTELLIGENCE MANAGEMENT AND TERRITORY NOTIONS*

---

**Stéphane Gorja**

Maître de conférences en Sciences de l'Information et de la Communication  
[gorja@loria.fr](mailto:gorja@loria.fr) , + 33 3 83 59 20 87

**Adresse professionnelle**

Equipe SITE - LORIA- Campus Scientifique - BP 239 - F-54506 Vandœuvre-lès-Nancy

**Summary:** Generally Territorial Intelligence is understood with a geographic referent. In this paper, we try to propose another alternative. It considers Territory as an intellectual construction which has a sense only in relation with others territories. These can be connected with it, affected it or superposed. In this manner, we present an interpretation of Territorial Intelligence Market in France with help of a comparison between Territorial Intelligence Devices and consulting company services in domain of Economic intelligence or Knowledge Management.

**Résumé :** En général l'Intelligence Territoriale est comprise à partir d'un référent géographique. Nous tentons dans cet article de proposer une alternative qui conçoit le territoire comme une construction intellectuelle qui n'a de réalité propre que vis-à-vis d'autres territoires qui le jouxte, influent sur lui ou se superposent. En ce sens nous présentons une interprétation du marché de l'Intelligence Territoriale en France en comparant les services proposées aux entreprises par des Dispositifs d'Intelligence Territoriale et des cabinets de consultants spécialisés en Intelligence Economique ou Gestion des Connaissances.

**Keywords:** territorial intelligence, territory, consulting company, cluster of competitiveness, enterprise cluster, knowledge management.

**Mots clés :** intelligence territoriale, territoire, cabinet de conseil, pôle de compétitivité, cluster d'entreprises, gestion des connaissances.

# *Territoriality and Territorial Intelligence Devices: A functional investigation from Intelligence management and territory notions*

## 1. INTRODUCTION.

This paper proposes a complementary interpretation of Territorial Intelligence from exploration of Territory concept when Intelligence is considered as a tool to support economic development of a territory. It is linked to another concept called: Territorial Intelligence Device (TID). The principal objective is to understand in terms of territories, the occupation of Territorial Intelligence Market in France with help of comparison between TID and consulting company services. This give us a support to propose a schema to consider territory and territoriality with a perception not only geographic. Also, we present in this paper, at first, our first hypothesis linked to what we define shortly a priori like TID from Economic Intelligence (EI) and Knowledge Management (KM) notions. Thus, we present shortly ours first works about French TID, what they are and their characteristics. From conclusions of these works, we present a manner to differentiate at the conceptual and functional level an EI or KM consulting company. Our principal question is about territory of a TID and its customers and we study some of them in parallel with some consulting companies. Because it seems that in sme' perspective, a TID and a consultant company are either competitors or collaborators. This is linked to our second point: the concept of territory with a non administrative point of view. For this, we refer to biological metaphor about territory and territoriality. We justify the possibility of this metaphorical transfer from biology to Territorial Intelligence with help of Economic Sciences and competitive strategy. In relation with military metaphor employed in Marketing Warfare, we propose two possibilities to consider a territory. It can be the space land where it evolves or just facet to understand its actions in terms of position or movement. Thirdly, we present our investigation about territorial actions of a set of consulting companies working in France in domain of Economic Intelligence or Knowledge Management. Then, we make a comparison with some French TID. We show that in terms of functions, consulting companies are not really different from TID. We also present some connected functions that these companies propose. And at this level, we ask for what a TID is in terms of intelligent functions. Lastly, we pose the problem of territory definition with an intellectual point of view in order to differentiate and oppose one structure to the others. From this we take on a biological work a

conceptual presentation of territory and territoriality. This affords us the possibilities to study territories from their "intelligence" functions.

## 2. TID AND TERRITORIAL INTELLIGENCE INTERPRETATION.

In some precedent works, we have developed a conception that Territorial Intelligence can be understand as a combination of Economic Intelligence (EI) and Knowledge Management (KM) actions developed on a territory and for a territory. This conception constitutes a strong hypothesis for the study of TID. It has been elaborated in three steps.

First, we have realized a state of the EI and KM definitions. We have reviewed around two hundred definitions of EI and KM conceptions and their possibilities to understand them (Goria, 2006b). Notably, we have shown that EI and KM notions according to the authors could be complementary or synonymous. Secondly, because in France it exists some structure which some people qualified as Territorial EI devices, we have looked for some examples of EI and KM devices. We have observed some of them that we put together with the expression: Territorial Intelligence Device (TID) (Goria, 2006a). Then TID and EI and KM conception are very linked in ours works. Thirdly, to better understand what is a TID, we have study nine French TID in terms of functions (Goria and Knauf, 2007). In this context a Device of Territorial Intelligence could be an enterprise cluster in Porter acceptance (Porter, 1998), a cluster of competitiveness (the French "*pôle de compétitivité*") or a EI or KM devices initiated by an institution (region, town, metropolitan, ...) and dedicated to a set of enterprises as for principal property to be on the same geographic or administrative land.

In extension of this last work, we propose to define a TID as *an organization which employs some people to realize some "intelligence functions" such as EI, KM or others connected like Innovation or Prospective (future studies) to assist some people (in general decision makers) living on the same territory.*

With this point of view, TID definition depends on functional interpretation of Intelligence management on a territory. In addition, we have observed that some of these TID has been developed in collaboration with a consulting company. In this case TID is a product proposed by

the consulting company. TID and consulting company can be considered as collaborators. But once the TID is in operation its team works like subcontractor in EI or KM for a set of customers. Then the TID and the EI or KM companies in the TID geographic zone are competitors. This remark can assist to show territory can be understood as competition and collaboration relations space. Ditto for Territorial Intelligence which can be understood in term of territoriality, ie. as manner for an organization or a set of organization to evolve on the territory on the bases of EI and KM actions.

### **3. THE QUESTION OF TERRITORY FROM THE BIOLOGICAL METAPHOR.**

To respond to the question above, it is necessary to consider the territory definition in the context of collaboration and competition. Definitions about territory don't miss. So, (Champolion, 2006) proposed a review of this concept in Geography, Education Sciences, Information and Communication Sciences and Sociology. From these definitions and some others issued from a collective thinking, he presents five first key-elements about territory concept: *"territory is a set of resources, territory is a "construction", territory looks towards future, territory can produce specific effects, on the territory there are no tensions between the "local" and the "global" which produces multiple memberships"*. In addition to these key-elements Dumas has proposed a sixth: *"a territory is a system can only be defined with the respect to point of view of the inquirer"* (Dumas et al, 2007). From ours precedent works and others reflexions about Territorial Intelligence, it seems to us that territory problematic, notably, asks the question of virtual worlds, scientific or sectorial activities shields and markets. These visions of territory are related to collaboration, cooperation and competition strategies on the territory. Then, we believed that biological metaphor could propose a solution to this problem.

Fortunately, the biological metaphor can be related without difficulties to Economic or Competitive Intelligence theories and consequently to theories of competitive strategy. In fact, to say that, we refer to work of (Hunt, Menon, 1995). These authors from another work (Arndt, 1985) keep five metaphors that don't present a priori a problem for the transfer knowledge from their original domain to competitive strategy domain. These five are: "warfare", "organism", "spaceship earth", "game" and "marriage". We can consider above definition of concept territory as related by their source of inspiration to "spaceship earth" (geography), "game" and "marriage" (sociology). We have chosen in this work as interest particularly to "organism" metaphor and its biological source and

also, a little bit the warfare metaphor and its military science source.

In this point of view, we have found from the Harrap's Chambers dictionary that a territory can be defined as: *"an area which a bird or animal treats as its own and defends against others of the same species"*. In biology sciences many others authors as (Klopfer, 1969), (Höllodber and Lumdsen, 1980), (Ridley, 1995), (Blondel, 1995) or (Schradin, 2004) propose a similar definition of it.

With this kind of definition, it is possible to consider a territory in opposition with others territories and using the notion of dominant species. With the above notion of biological metaphor, in analogy with our TID, species are companies or other organizations. Territory is an intellectual building that it represents on the space of organization nutrition and development. In relation with territoriality strategies or conquest of territory, we can consider biological definition of territory as compatible with its definition in economics sciences and especially where military metaphor is employed. For example in Marketing, territory can be considered as customer's brain (Band, 1985), (Swiners, Briet, 1987), (Ries, Trout, 2000).

Thus, these elements of territory definition gives us two possibilities, but with different consequences in the representation of territory. In the first case, it is a space where an organization evolved and territoriality refers to the manner to use this space in function of component of its territory and adjacent territories. In the second case, an organization owns several territories; each one is just a part of a set depending on all of organization action fields. Then territoriality is equivalent to strategy to conquer or preserve one of its territories.

### **4. FUNCTIONAL TERRITORIES OF TID AND EI OR KM CONSULTING COMPANIES IN FRANCE.**

In the past, we have studied different devices of Territorial Intelligence in France (Goria, Knauf 2007). For this we supposed Territorial Intelligence could be founded on the acknowledgement of territory from geographic zone where a strategy of Economic Intelligence, Knowledge Management or Innovation is developed by or for a set of companies which are in the territory. With this hypothesis, we tried to understand what the principal functions of a Territorial Intelligence Device (TID) are. From this study, we posed the question of particular personnel required by them.

Now, we take a new look at this question from functions of TID to better understand the term "territorial" in this expression. We ask the question: are there some differences in terms of functions between a TID and an EI or KM consulting company?

In fact, fundamentally, all TID leans on a team of specialists to pilot and applies the device's functions. In addition, some TID<sup>1</sup> were having consulting company as project manager. The gain of this question assists to extend the potential functions of Territorial Intelligence. In fact, we try to recognize what are the functions shared by consulting company having participated or not in a TID foundation and functioning of TID. With this questioning, we consider the territory from a biology point of view.

#### 4.1 Investigation methodology and data panel.

To limit the shield of our investigations, we consider only the French space as plan to identify the territory differentiation. Our method is composed of three steps. First, from an a priori classification of TID coming from previous works, we proposed a survey of a panel of these TIDs and their functions. These functions are a functions presented like fundamental element of Economic Intelligence or Knowledge Management. Indeed, from a glance through the definitions of EI and KM, we could observe for EI these functions: "Watch" (and others kind of systematic or recurrent information retrieval), "Protection and Security", "Influence and Networking". For KM, we have also noted these functions: "Knowledge Mapping", "Knowledge Capitalization", "Communities of practice development", "Training" (and others kind of interpersonal knowledge transfer). Second on the base of functions identified, we look for a set of Economic Intelligence or Knowledge Management consulting company and observe what their functions with some others not very present in the first panel of TIDs. These others principal functions are: "Crisis management" (including crisis communication), "E-learning", "Innovation help" and "Prospective". At last we dispose of eleven functions to characterize a functional space to understand Territorial Intelligence in its French TID applications.

On this basis, we looked for a panel of EI companies. For this we have chosen to take the set of consulting companies identified by (Intelligence Online, 2006) excluding just three companies are too much physical security oriented. Then we have kept eighteen societies interested in EI French market.

For KM consulting company panel, without a tool like above, we use google to look for eighteen companies of an equivalent panel as in EI. These companies must highlight KM (or a French

<sup>1</sup> For example, CEIS (<http://www.ceis-strat.com/>) was been project manager of DECILOR device (<http://www.decilor.org/>).

synonym of "gestion des connaissances") in their abilities.

For the TID, we have kept our first panel of nine and added nine others that we could obtain some information about their EI or KM assistances and for which we can easily associate to a geographic territory. For this, geographic territory of TID has a meaning close to (Knauf, 2007): a geographic zone with a size between town and nation which has a reality historical, cultural and if possible administrative. Thus, the TID panel includes in "italics" the French administrative regions associated to it:

- 6 Regional Economic Intelligence Devices: Bourgogne Réseau / Innovation (Network / Innovation Bourgogne) - *Bourgogne*, COGITO - *Alsace*, DECILOR - *Lorraine*, IAAT<sup>2</sup> - *Poitou-Charente*, Limousin expansion - *Limousin*, Réseau IE Basse Normandie (Basse Normandie EI Network) - *Basse Normandie*.
- 8 clusters of competitiveness: Aérospacé-Valley - *Midi-Pyrénées & Aquitaine*, IAR<sup>3</sup> - *Champagne-Ardenne & Picardie*, Imaginove - *Rhône Alpes*, iTrans - *Nord Pas de Calais & Picardie*, Pôle productique - *Rhône Alpes*, Pôle SCS<sup>4</sup> - *Nord Pas de Calais*, System@tic - *Ile de France*, Véhicule du futur - *Alsace*.
- 4 entreprise clusters: Aériades - *Lorraine*, Cluster Beaujolais for Beaujolais wine territory, Cluster bois lorrain (lorrain wood cluster) - *Lorraine*, Organics cluster - *Rhône Alpes*.

At last, we have questioned these three sets of potential service providers in EI or KM on a regional geographic zone to realize a mapping of their respective action territory (fig. 1 and 2). Moreover, a data was added for the representation and comparison of KM and EI territories of consulting companies (fig. 2). It is about the positioning of consulting companies to propose a help to TID development. This information can be presented as a specific service proposed or deducted from previous customers as TID, Cluster of competitiveness or enterprises clusters.

<sup>2</sup> Institut Atlantique d'Aménagement du Territoire (<http://www.iaat.org>)

<sup>3</sup> Industries et Agro-Ressources (<http://www.iar-pole.com>)

<sup>4</sup> Solutions Communicantes Sécurisées (<http://www.pole-scs.org>)

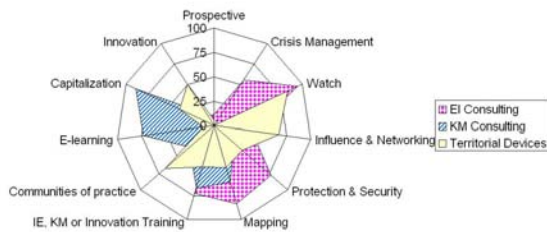


Fig. 1 Territorial intelligence functional territories in France.



Fig. 2 Functional complementarities between EI and KM consulting companies on the French territory.

#### 4.2 Observations and first hypothesis.

EI and KM consulting companies propose a set of actions are relatively distinct and complementary. Only watch action is a little redundant. With regard to Training and Mapping actions, it seems that their interpretation is very dependent to application domain (KM or EI).

Three actions proposed by consulting companies are not or rarely employed by TID. There is Prospective (but we can suppose this action is developed before the TID creation at a macro territorial level). We have E-learning that is sub employed by TID. For Crisis management action, this function seems not to be a present need for TID.

We can note that, Information Protection and Security and Knowledge Capitalization functions are a little bit neglected by most of TID. To make durable is possibly not the principal current preoccupation of TID.

Innovation and Communities of practice development are two actions present in TID but lesser proposed by consulting companies. This can imply that other consulting companies could be take place in the market of TID development.

At the level of help to TID development, we can remark that density of consulting present on this particular sector is not very important. On a total of 36 companies studied, only 7 propose an experience in this activity sector.

In relation with the study of Territorial intelligence territory of TID and consulting companies, we can

interpret, for example, help to TID development has not a big population density in France. Ditto for aggressiveness which seems not very hard interpretation in terms of territories. Consulting companies share themselves repartition of Territorial Intelligence functionalities.

### 5. TERRITORIAL INTELLIGENCE AND TERRITORIALITY.

Territorial Intelligence can be understood in term of process (Bertacchini, 2004), (Girardot, 2004), but with our perspective, we consider it as a zone that can be identified, delimited (more or less precisely) and on which EI, KM, Innovation and others connected action can be understood in terms of positioning or strategy. With the Territory definition of (Dumas et al, 2007), Territory respond principally to a question. With Biological metaphor, we can respond to a question in term of evolution, population density, competition, defence and aggressiveness. From military metaphor, Territorial Intelligence compartments can be understood in terms of conquest, best position, movement and alliances. Then, the manner to evolve on a territory is to us synonymous to territoriality which defines a kind of occupation strategy of territory. It is also a question of occupation variation into a territory between two moments. As all others concept we can consider the Territory, with three perspectives: a temporal perspective because a territory has a reality only for a limited period, an objective perspective that we can linked to (Dumas et al, 2007) territory definition, a space perspective because this dimension is intrinsically included in territory conception and, a perception scale perspective because measure scale affects on thing perception. Therefore, we can propose a schema inspired by one in biological sciences (Brown, 1964) and ours works on concept representation (Goria, 2006a) which is presented in figure 3.

With the schema of fig. 3, we consider a Territory as a point of an inquirer which depends of four conceptual dimensions: objective, time, space and perception scale. With regards to biological works, Territory can be represented by two factors: requisites for development and population density. In function of characteristics of these two factors the degree of competition varies. If population density increase or resources requisites for development turn down, competition increase and three elementary compartment strategies can be employed. In fact, combination of two or three strategies can generated many types of territorialities.

In relation with the study of Territorial intelligence territory of TID and consulting companies, we can interpret, for example, help to TID development has not a big population density in France. Ditto for aggressiveness which seems not very hard

interpretation in terms of territories. Consulting companies share themselves repartition of Territorial Intelligence functionalities.

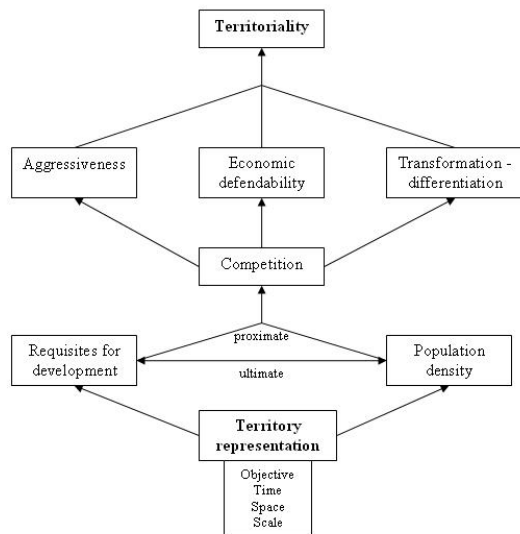


Fig. 3 Form Territory representation to Territoriality interpretation

For economic defendability, it can be translated in term of cluster strategy for classical companies or in terms of cooperation between some consulting companies and/or TID for some extraterritorial intervention. We can exemplify this solution with the European STRATINC project (Passas et al, 2006). Transformation or differentiation strategies refer to need to innovate for companies in international context. In this point of view the French national strategy of cluster of competitiveness development can be understand as a combination of economic defendability and transformation-differentiation strategies.

## 6. CONCLUSION AND LIMITATIONS OF THIS STUDY.

If TID can depend on a territory like a geographic zone with a physical reality, territories of consulting companies have a fuzziier outlines. However, a territory can be interpreted as an action shield with which we can mark the limits. With this notion and from biological metaphor we can try to understand strategies of territoriality chosen by set of actors on a particular perception space. In this work, considering from the basis French territory of EI, KM and TID, we have proposed a study of respective functional territories of TID and consulting companies in the domain of Territorial Intelligence. Finally, we have developed a schema to understand Territoriality from a territorial question. This proposition and study can be extended to understand, for example, the European territory of Territorial Intelligence or to make a comparison between country practices of it.

Another element in this work is about Innovation help function. Indeed, we have seen that this action is proposed by half of TID, but very little by consulting companies. This has led us to suppose that this action is the speciality of others consulting companies. In fact, from a little bit of investigation on Innovation help, we can imagine that others functions are included into Territorial Intelligence considerations. Among them, for the moment, we can advance some helps to: Creativity, Technology transfer, Elaboration of Business plan. It seems this kind of consulting to be considered as EI and KM consulting companies. In addition, this analysis could extend our perception of intelligence territorial TID territory itself. Thus, Territorial Intelligence as a research object could concern new KM and EI territories or, application of usual territorial intelligence functions to other kinds of territories as new territories of art (Fortin, 2000). About limitations of this study, we emphasize its dependence on our first TID hypothesis from EI and KM conception. Considering KM and EI hypothesis to define TID, we have concluded with this work that it is necessary to extend functional definition of TID to Innovation functions. Nevertheless, it is preferable to have a more social conception of Territorial Intelligence, for example to propose others functional definition of TID. Another dependence is linked to the studied panels. Even if EI and KM contribution of TID is kept, in others countries than France, consulting company conception of these two notions can be different for other market than France. In addition, in this paper investigation about French clusters of competitiveness is very limited. Only 8 out of 71 are considered to not reduce this study to this only TID type. With an European TID perception, in place of a set of three panels of 18 TID, EI and KM consulting companies, we can suppose that it will be better to understand functional territories of this entities to study at least 10 set of 3 or 4 panels (with Innovation consulting companies). Many works about TID consideration can be realized again.

## Bibliography

- Arndt, J. (1985), "On Marketing Science More Scientific: Role of Orientations, Paradigms, Metaphors, and Puzzle Solving", in *Journal of Marketing*, (49), p. 11-23.
- Band, W. (1985), "Four Strategies for Attacking the Competition", *Sales and Marketing Management in Canada*, June.
- Bertacchini, Y. (2004), "Entre information & processus : l'intelligence territoriale", *Revue Les Cahiers du Centre d'études et de Recherche, Humanisme et Entreprise*, (267).

Blondel, J. (1995), “*Biogéographie: approche écologique et évolutive*”, Masson, Paris.

Champolion, P. (2006), “Territory and territorialisation: present state of the Caenti thought”, in *proceedings of the 4<sup>th</sup> annual International Conference of Territorial Intelligence CAENTI – ALBA IULIA*, (2) p. 52- 59.

Dumas, P. (2007), “Contribution of socio-technical systems theory concepts to a framework of territorial Intelligence”, in *proceedings of the 5<sup>th</sup> annual International Conference of Territorial Intelligence CAENTI – HUELVA*, p. 92- 105.

Dumas, P. (2004), “Intelligence, Territoire, Décentralisation ou la région française”, in “*Intelligence Territoriale : Le Territoire dans tous ses états*”, Presses Technologiques, Toulon.

Fortin, A. (2000) “*Nouveaux territoires de l’art. Réseaux, régions, place publique*”, Québec, Nota Bene.

Girardot, J.J. (2004), “Intelligence Territoriale et participation”, in *Revue ISDM ((Information Sciences for Decision Making)*, (16).

Goria, S. (2006a), “*L’Expression du problème dans la Recherche d’Informations : Application à un contexte d’Intermédiation Territoriale*”, Doctoral Thesis, Nancy 2 University.

Goria, S. (2006b), “Knowledge Management et Intelligence Economique : deux notions aux passés proches et aux futurs complémentaires”, in *Revue ISDM ((Information Sciences for Decision Making)*, (27).

Goria, S., Knauf, A. (2007), “Composite picture to help to study and to define a Regional Economic Intelligence Device”, in *proceedings of the 5<sup>th</sup> annual International Conference of Territorial Intelligence CAENTI – HUELVA*, p. 148- 164.

Hölldobler, B., Lumsden, C. (1980), “Territorial strategies in ants”, *Science*, (210) p 732-739.

Hunt, S.D., Menon A. (1995), “Metaphors and Competitive advantage: Evaluating the Use of Metaphors in Competitive Strategy”, in *Journal of Business Research* 33, p. 81-90.

Intelligence Online (2006), “*Le Top 100 de l’intelligence économique*”, Indigo Publications, Paris.

Klopfer, H. (1969), “*Habitats and territories: a study of the use of space by animals*”, Basic Books Publishers, New York: London.

Knauf, A. (2007), “*Caractérisation des rôles du coordinateur animateur : émergence d’un acteur nécessaire à la mise en pratique d’un dispositif régional d’intelligence économique*”, Doctoral Thesis, Nancy 2 University.

Passas, I., Sefertzi, E., Komninos, N., Guth, M., Pelayo, E., Aroca, J.A., Halvorsen, K., Krogh, A.C., Komendantova, M., Lien Egerund, M. (2006), “*Strategic Intelligence and Innovative Cluster: a regional policy blueprint highlighting the uses of strategic intelligence in cluster policy*”, Interreg IIC

Porter, M. E. (1998), “Clusters and the New Economics of Competition”, *Harvard Business Review*, November December 1998, p. 77-90

Ridley, M. (1995), “*Animal Behavior*”, Blackwelle Science, Maleden.

Ries, A., Trout, J. (2000), “*Positioning the battle for your mind*”, McGraw Hill Company, New York.

Schradin, C. (2004), “Territorial defence in a group-living solidarity forager: who, where, against whom?”, in *Behavioral Ecology and Sociobiology Review*, (55) 5, p 439-446.

Swiners, J.L., Briet, J.M. (1987), “*Warketing : une autre vision de la stratégie*”, ESF, Paris.